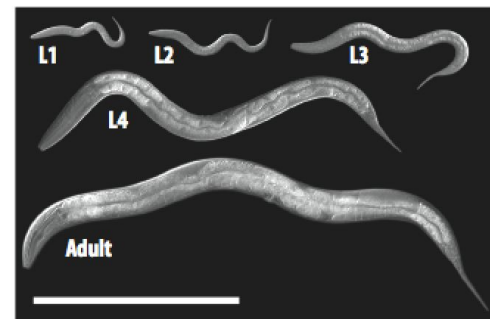
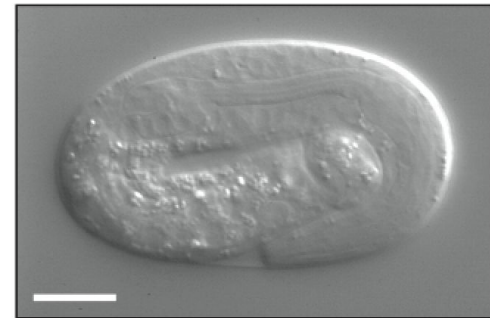
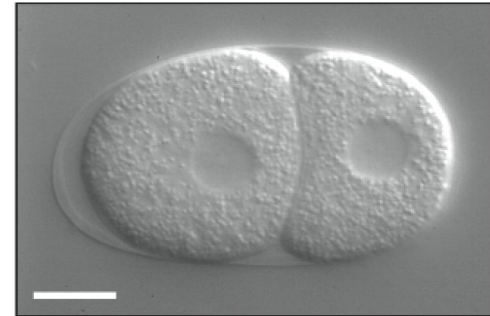
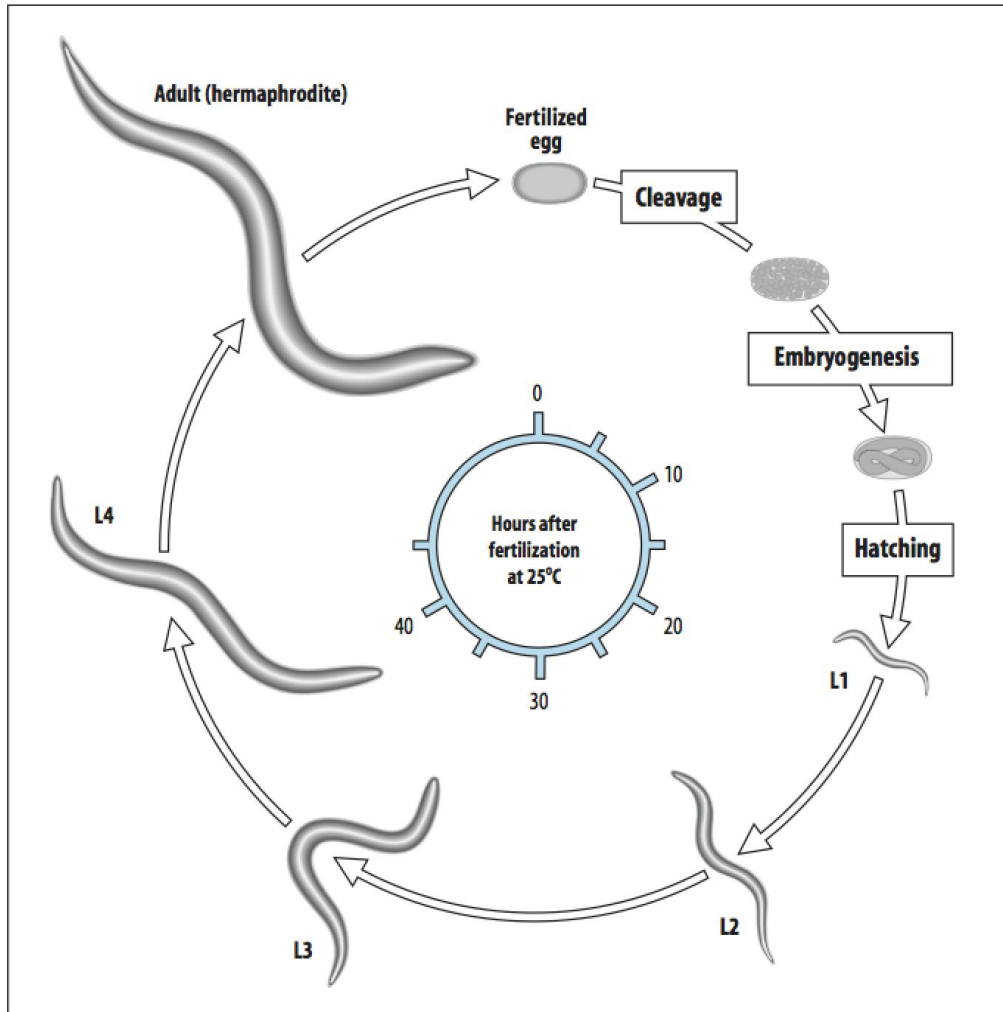
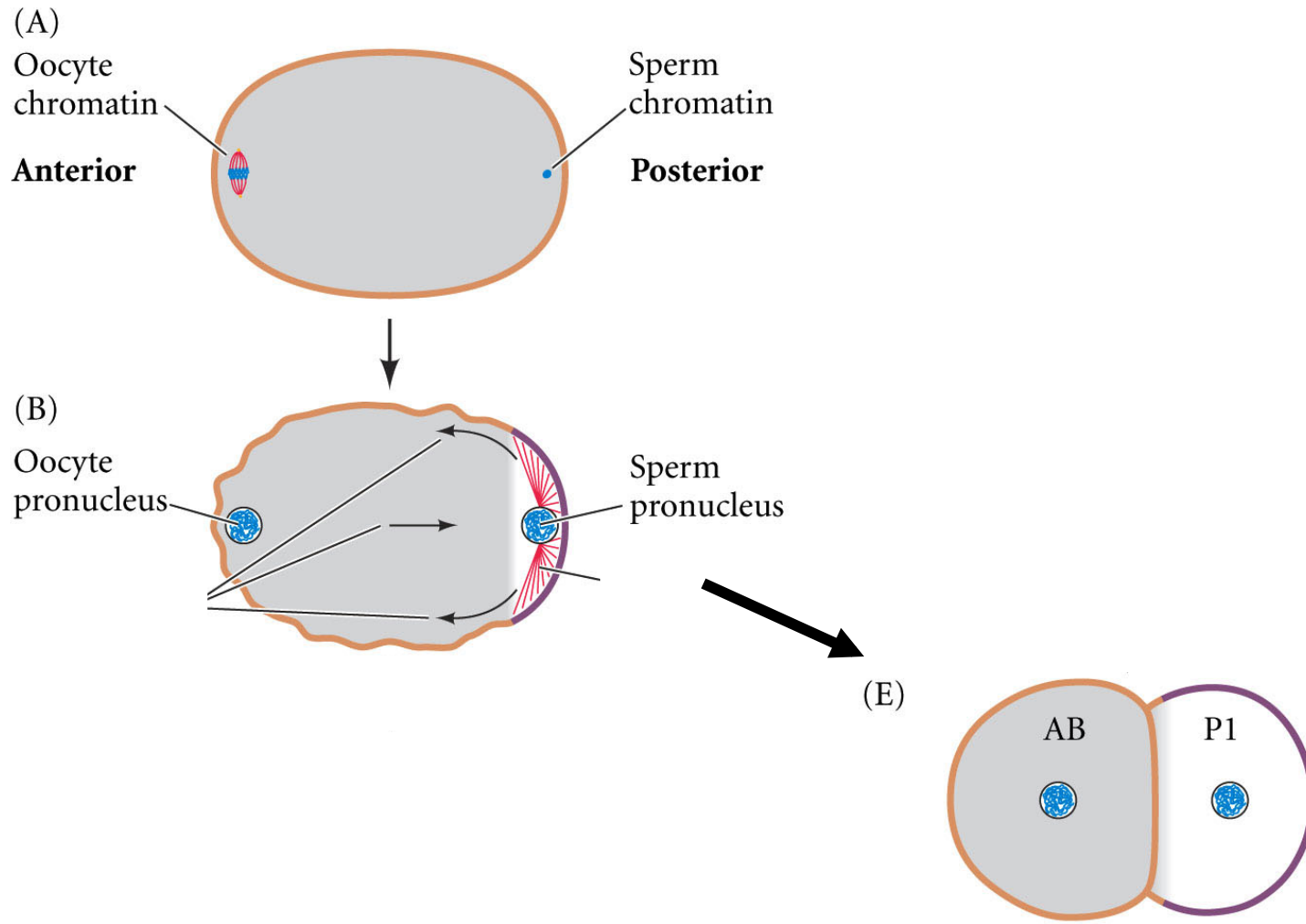
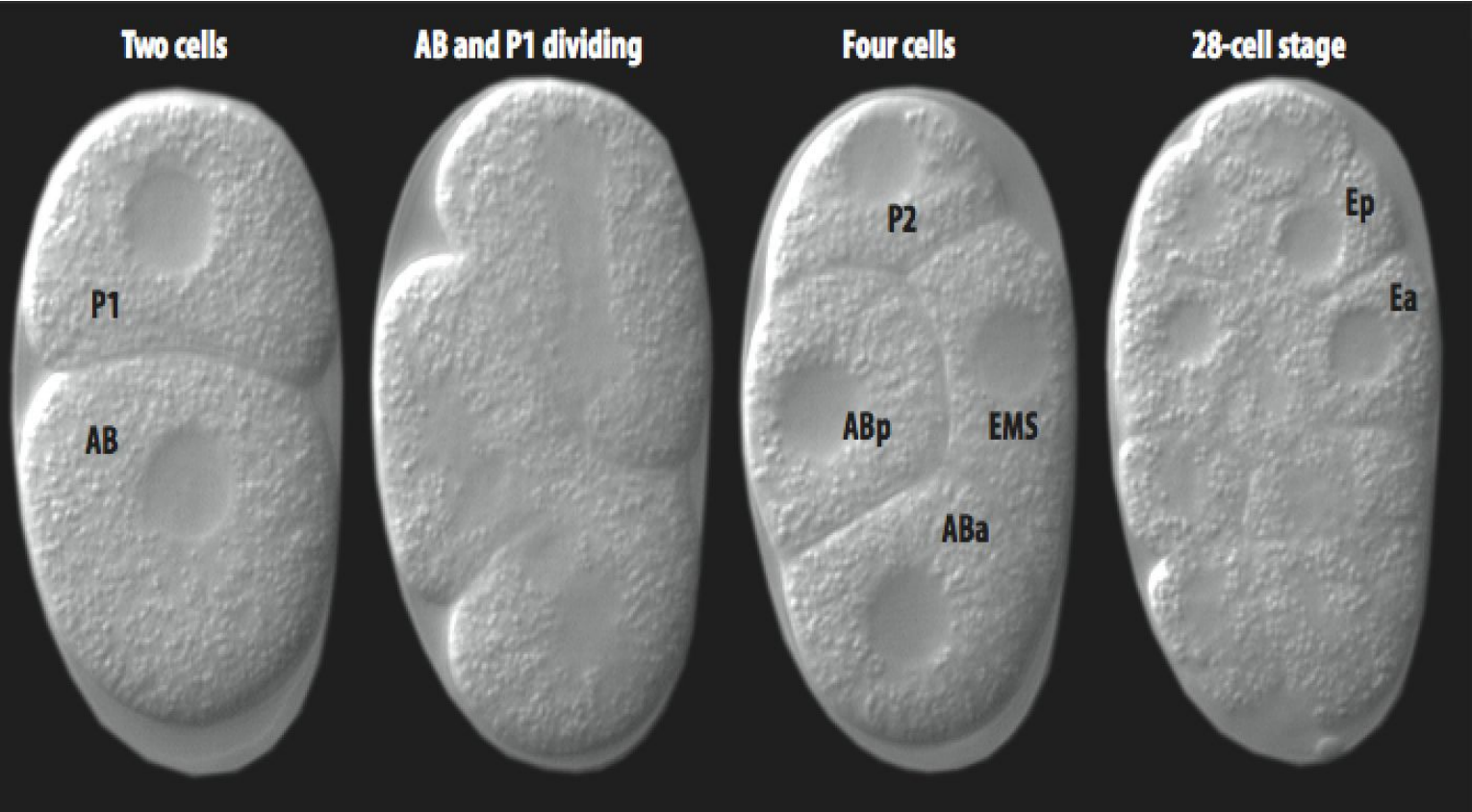


Life cycle of *C.elegans*

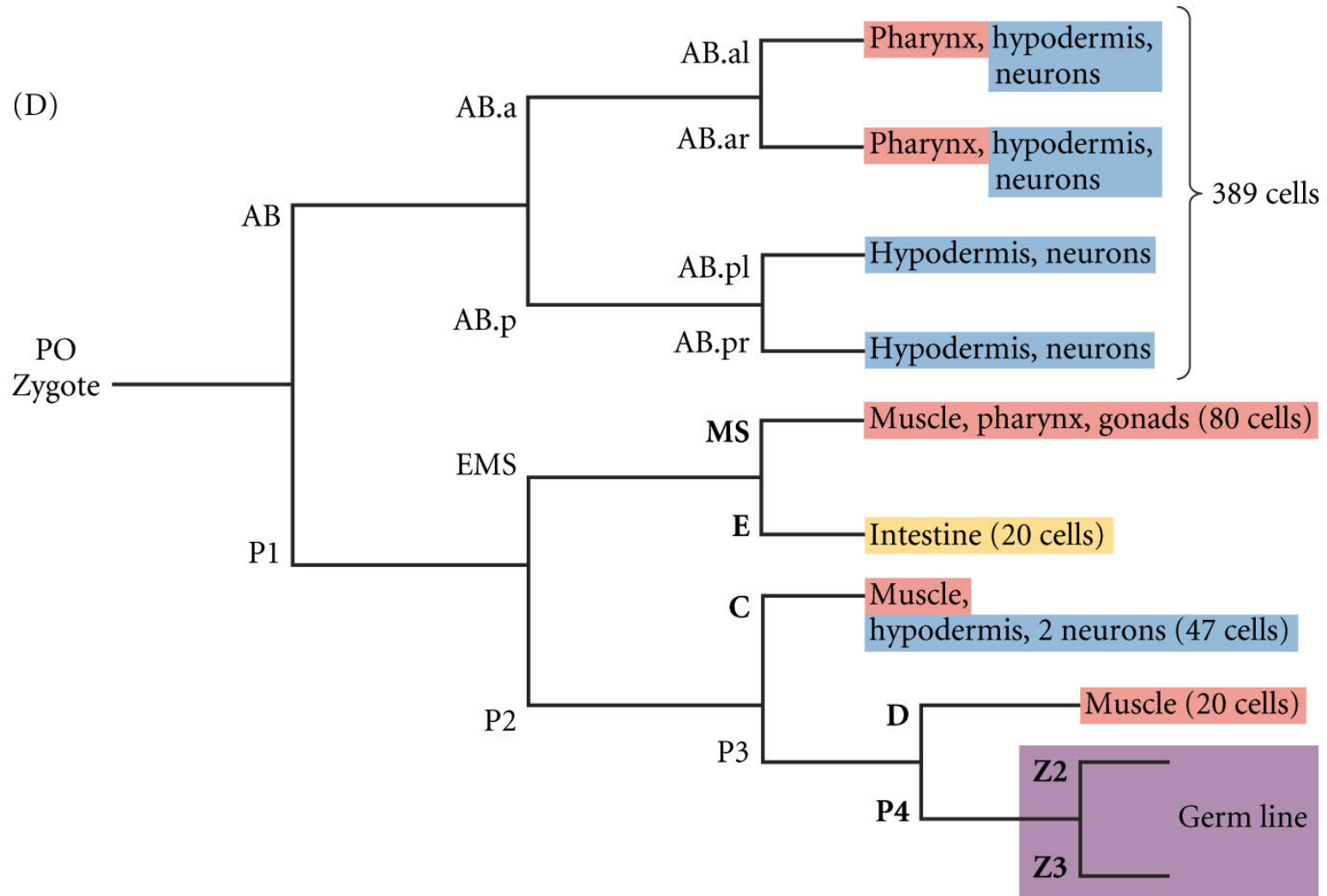


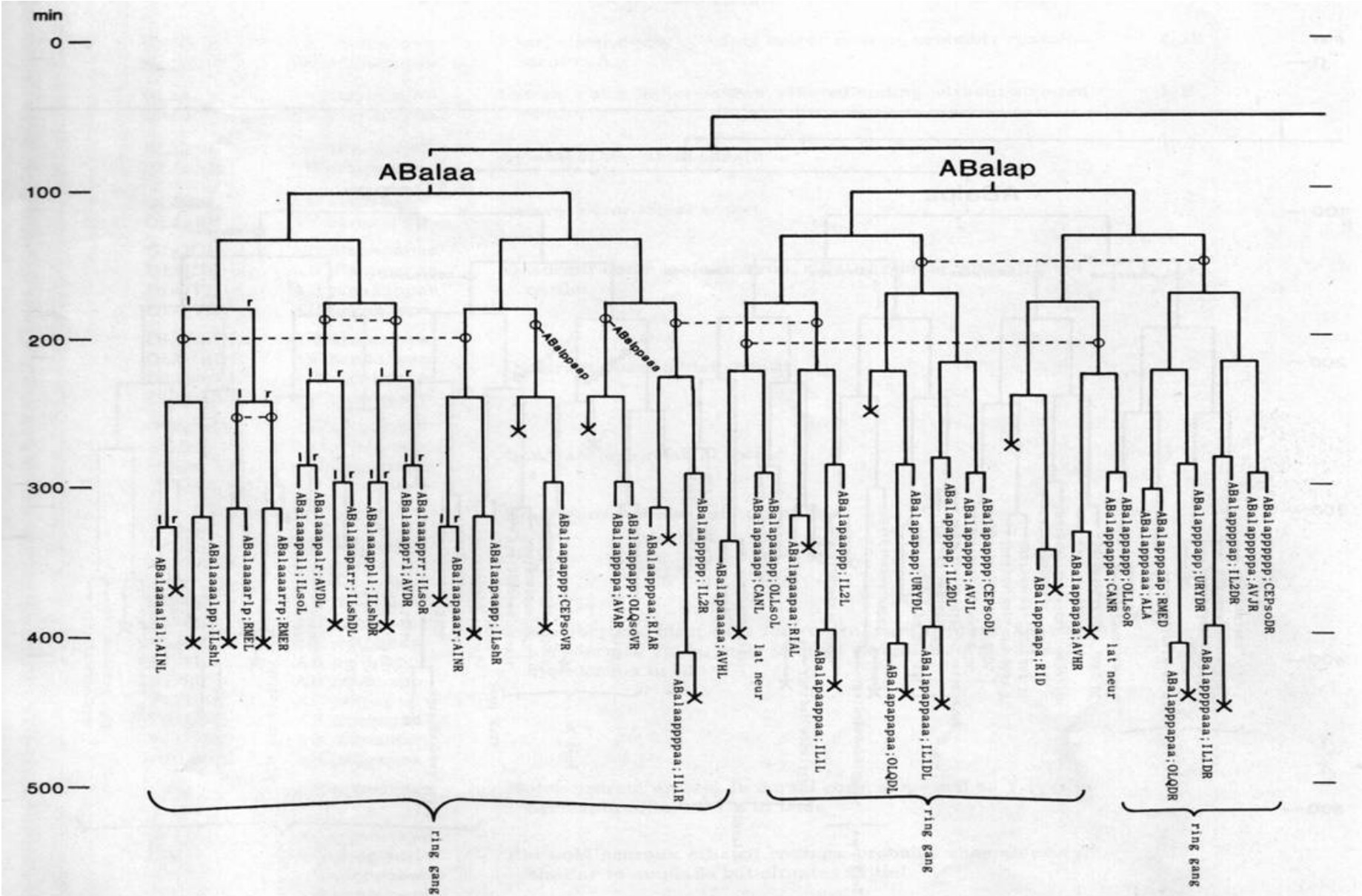
Fertilization establishes polarity and cell lineage in *C.elegans* embryo

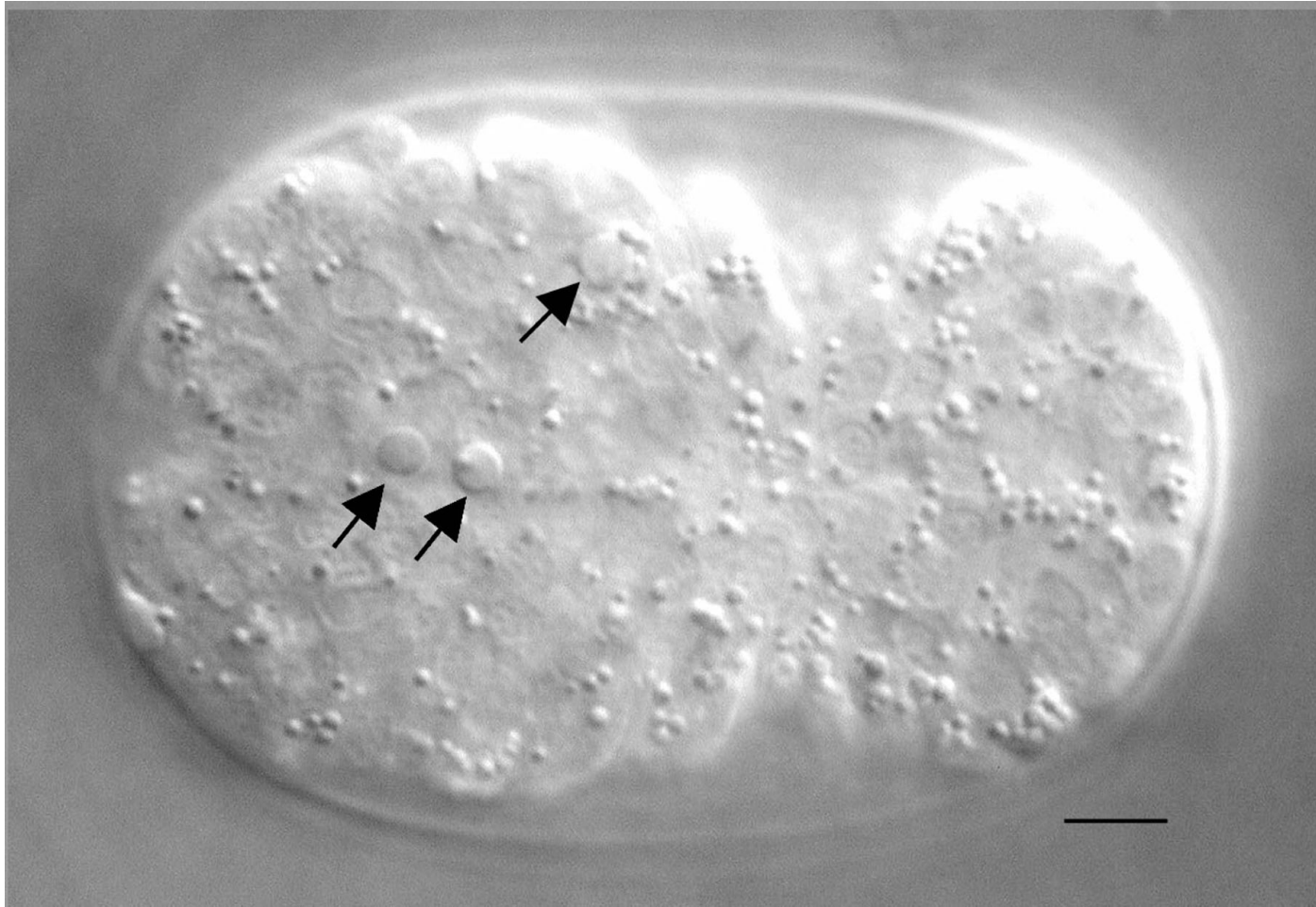




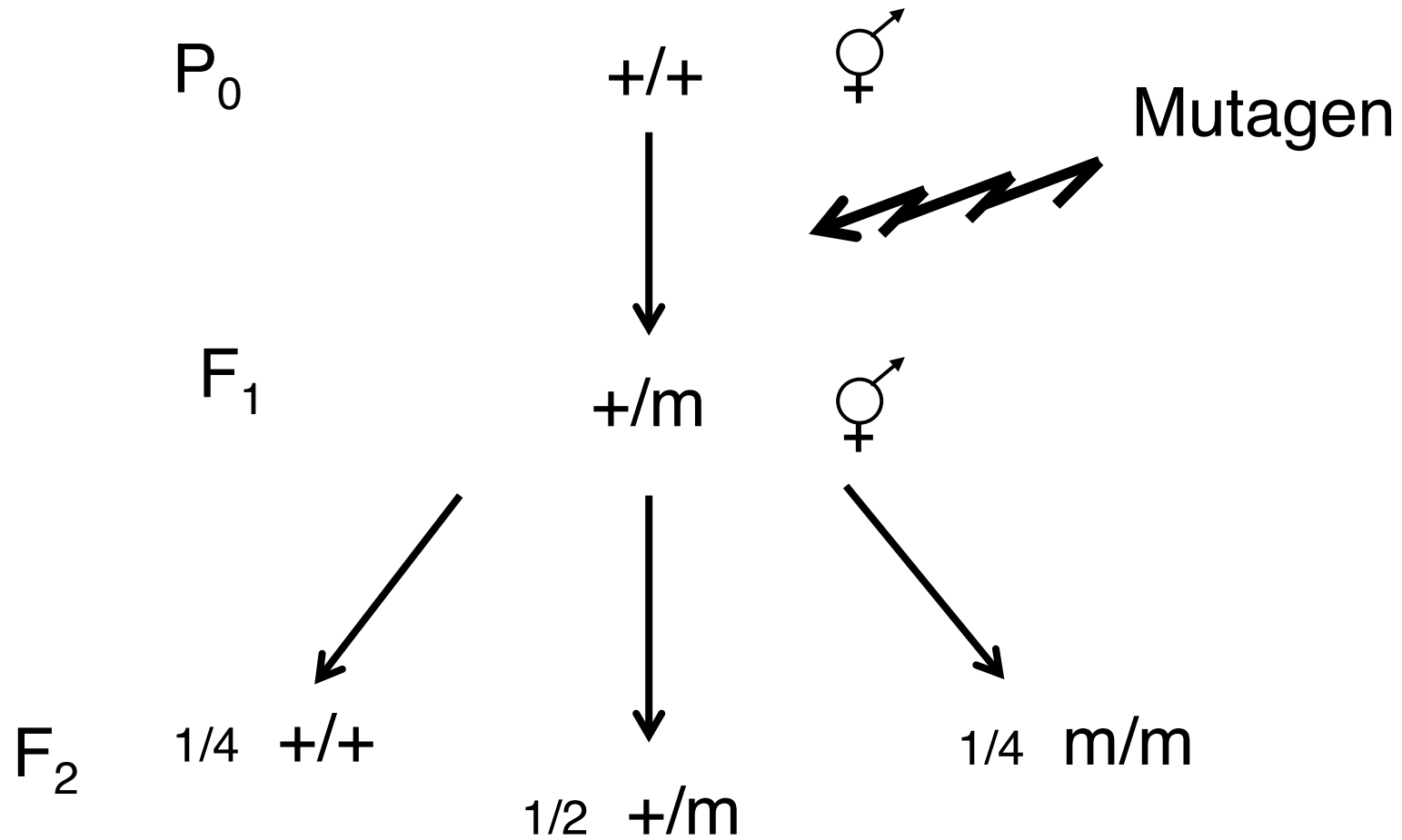
Cell Lineage *Caenorhabditis elegans*



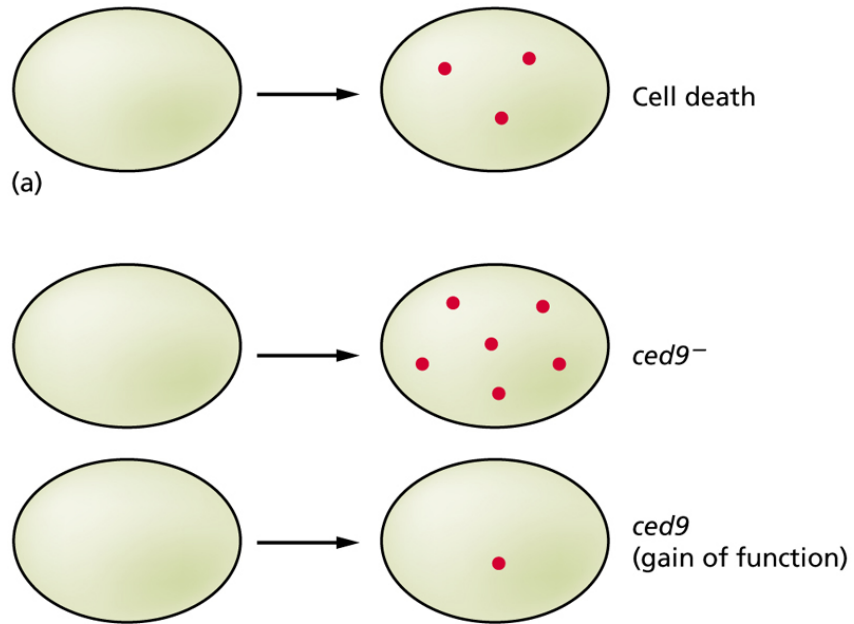


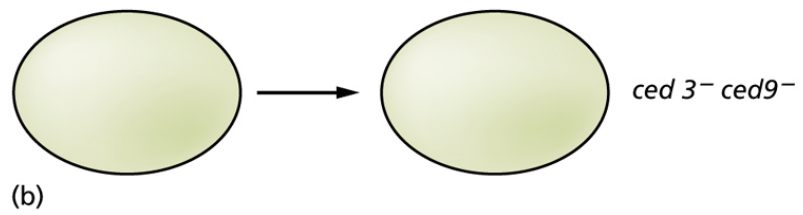
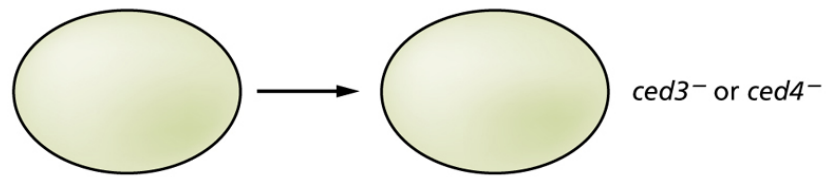
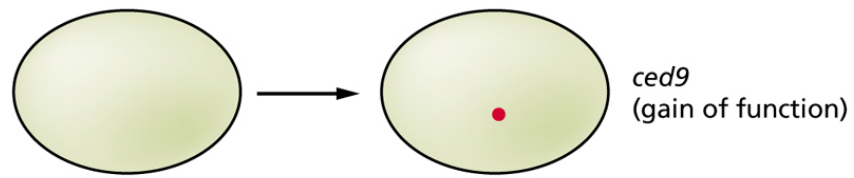
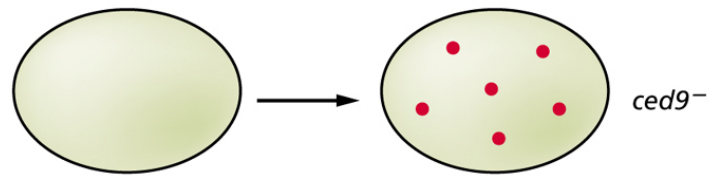
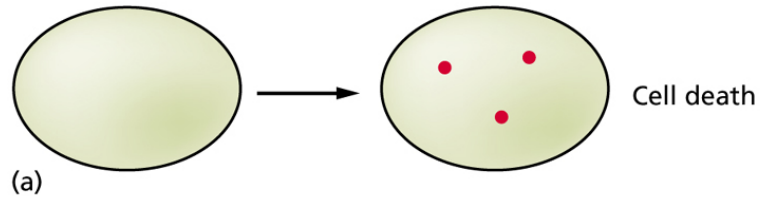


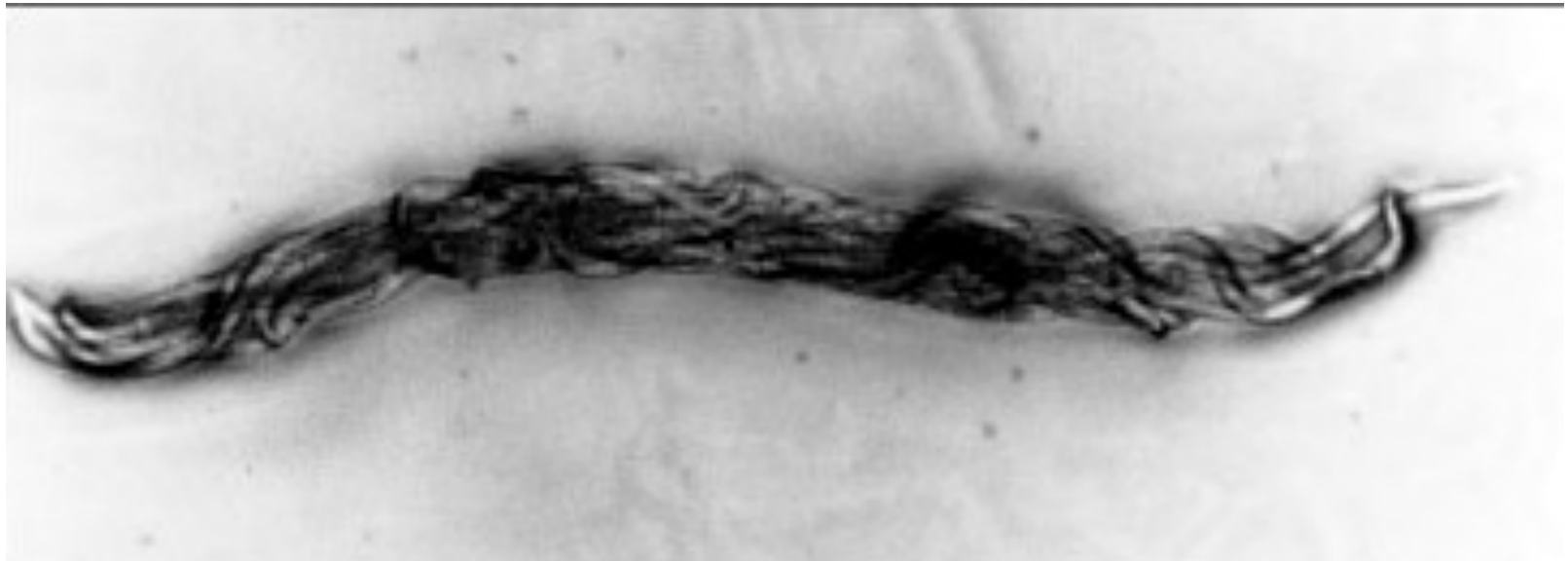
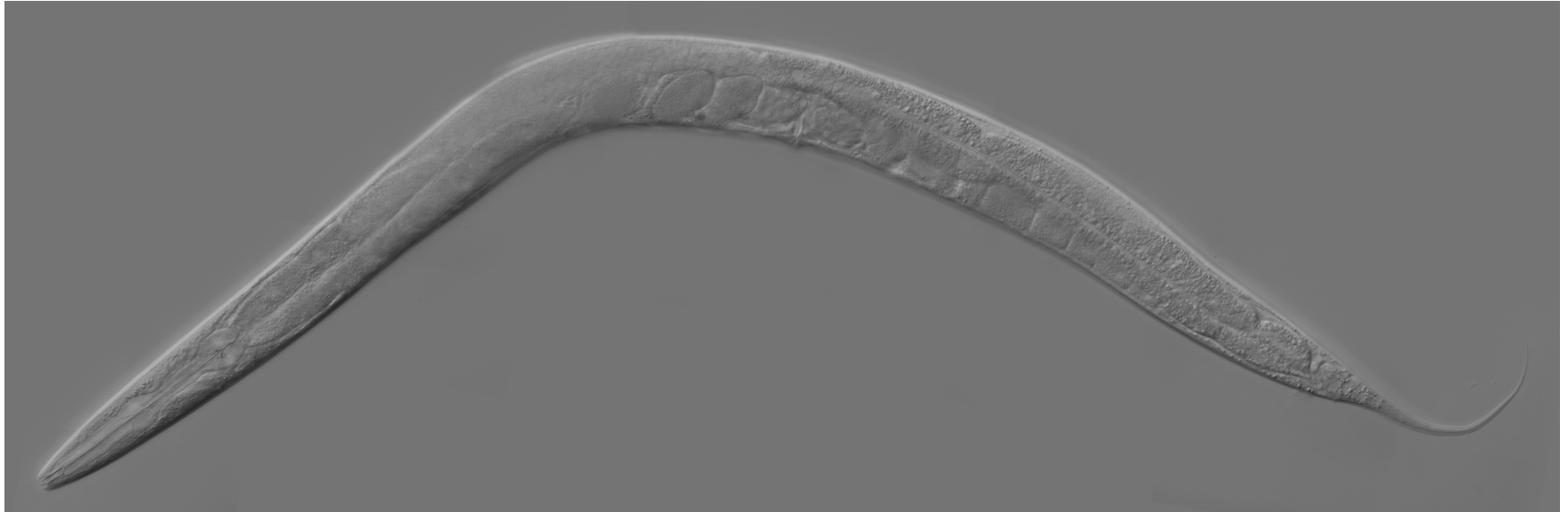
Mutagenesis of *C.elegans*

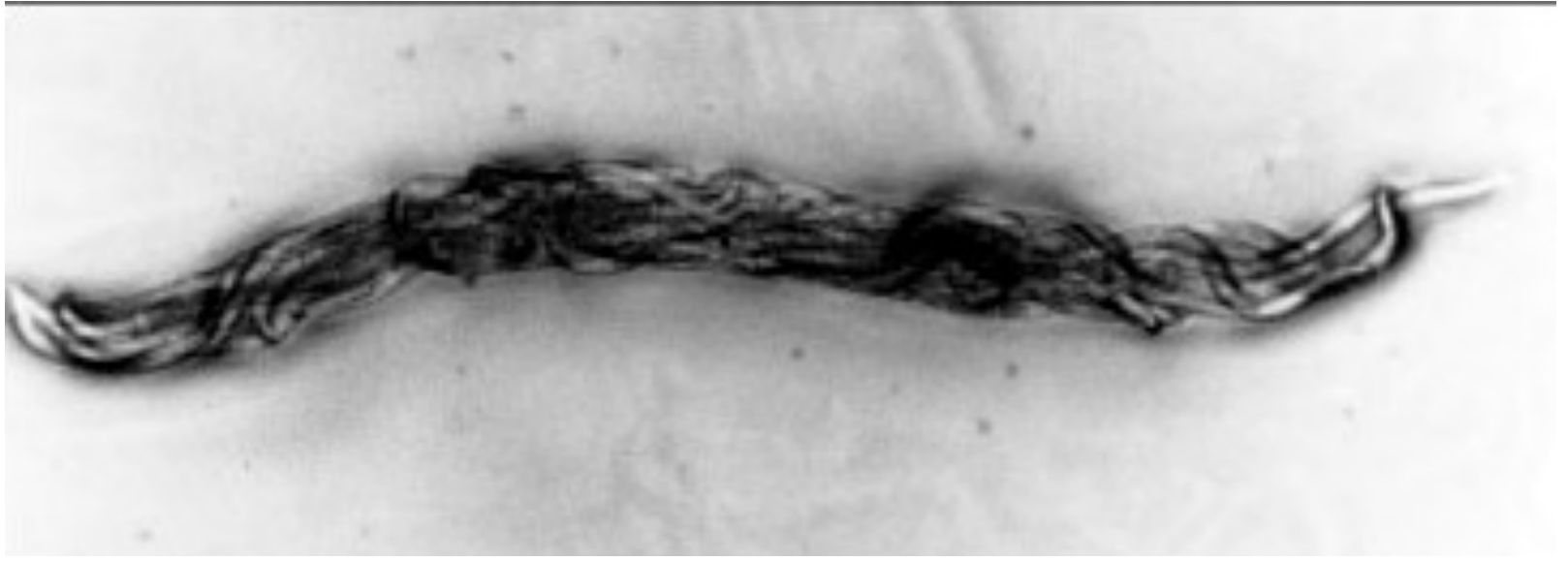


Genetics of Apoptosis

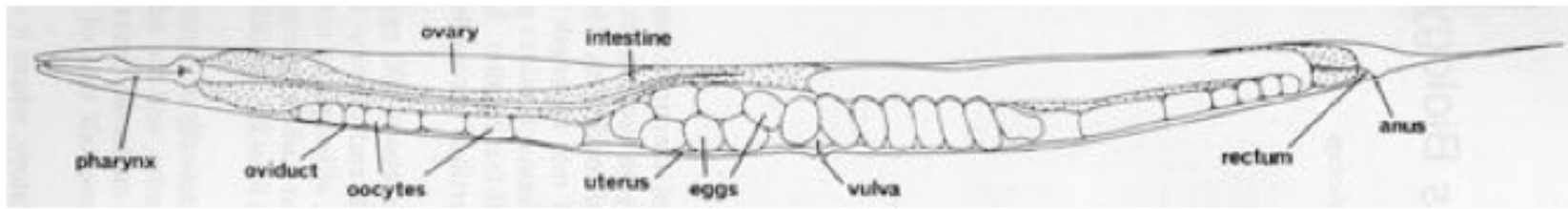








Generating transgenic worms



Disruption of normal brain development by blocking apoptosis

(A) *caspase-9*^{+/+} (Normal)

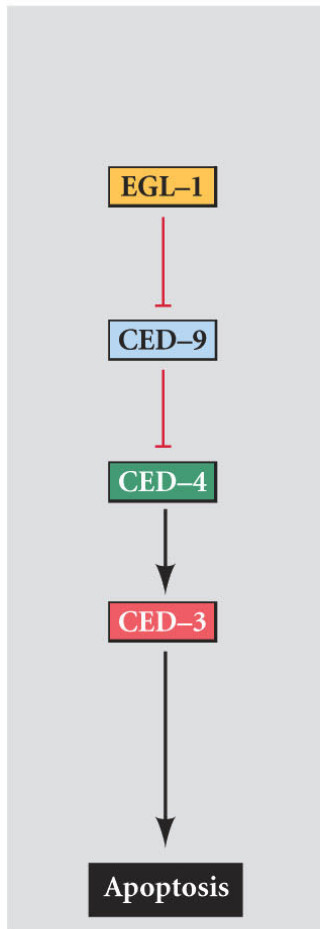


(B) *caspase-9*^{-/-} (Knockout)

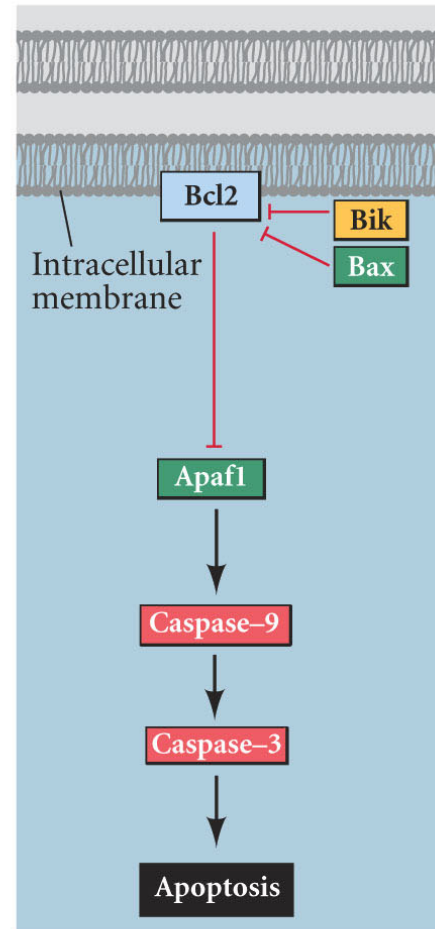


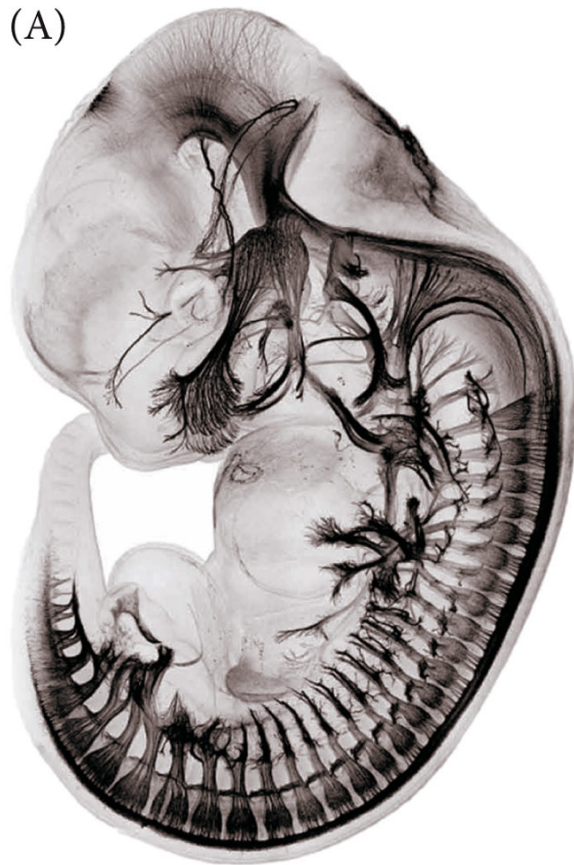
Apoptosis pathways in nematodes and mammals

(A) *C. elegans*

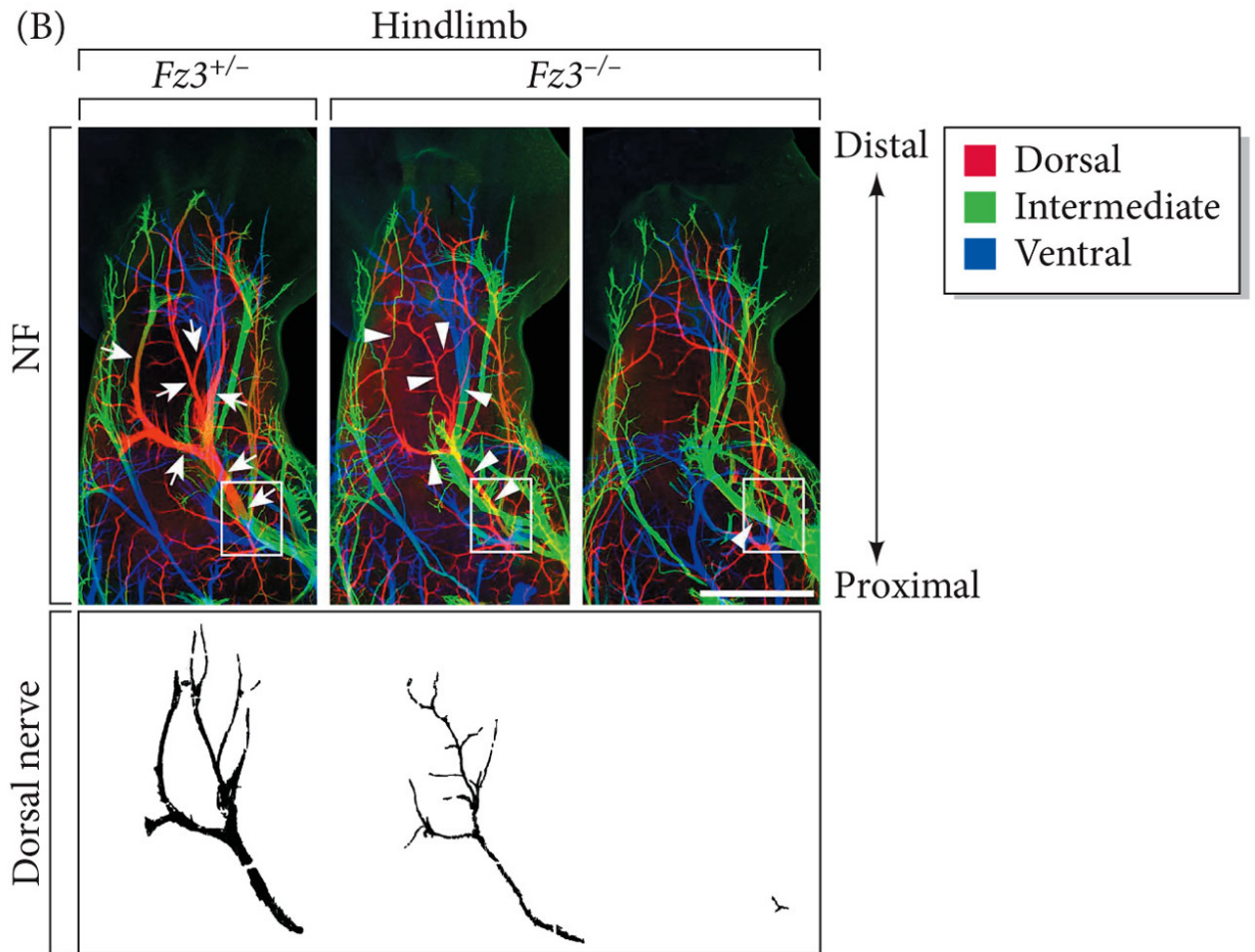


(B) Mammalian neurons





DEVELOPMENTAL BIOLOGY 11e, Figure 15.42 (Part 1)
© 2016 Sinauer Associates, Inc.



DEVELOPMENTAL BIOLOGY 11e, Figure 15.42 (Part 2)
© 2016 Sinauer Associates, Inc.